



*The **VISION** of MPRI is that every prisoner released into the community will have the tools needed to succeed.*

www.michpri.com

1

The **MISSION** of MPRI is to reduce crime by implementing a seamless plan of services and supervision developed with each offender—delivered through state and local collaboration—from the time of their entry to prison through their transition, reintegration, and aftercare in the community.

2

Goals

- Enhance public safety
- Reduce the number of victims
- Increase the success rates of former prisoners
- Reduce the costs associated with crime

3

Implications

- MPRI has changed how we...
 - Identify risks, needs, strengths of offenders
 - Target resources
 - Access programming and other resources
 - Work together and collaborate
 - Supervise and monitor offenders

4

Why MPRI?

- 48% of Michigan's parolees fail on parole within 2 years
- Parole failures costs Michigan \$117 Million per year

5

MPRI History

Developing the Model

- National Institute of Corrections (NIC)
 - *Transition from Community to Prison Initiative (TPCI)*
- National Governors Association (NGA)
 - *ReEntry Policy Academy*
- US Department of Justice (DOJ)
 - *Serious and Violent Offender ReEntry Initiative (SVORI)*
- Council of State Governments
 - *ReEntry Policy Council Report*
- Urban Institute
 - *Data Mapping*

6

MPRI Model

*Focus on system-wide risk-reduction strategies
built on the evidence of effective practice*

- **Phase 1: Getting Ready**
 - Institutional Phase
 - From intake to parole decision

- **Phase 2: Going Home**
 - Transition or ReEntry Phase
 - Release preparation and release decision making

- **Phase 3: Staying Home**
 - Community and Discharge Phase

7

PHASE ONE- GETTING READY

8

PHASE ONE

The **institutional phase** describes the details of events and responsibilities which occur during the offender's imprisonment from admission until the point of the parole decision and involves the first two major decision points:

- 1. Assessment and classification:** Measuring the offender's risks, needs, and strengths.
- 2. Prisoner programming:** Assignments to reduce risk, address needs, and build on strengths.

9

PHASE TWO- GOING HOME

10

PHASE TWO

The **transition to the community or ReEntry phase** begins approximately six months before the offender's target release date. In this phase, very specific ReEntry plans are organized that address housing, employment, and services to address addiction and mental illness:

- 3. Prisoner release preparation:** Developing a strong, public-safety-conscious parole plan.
- 4. Release decision making:** Making parole decisions based on objective assessment and transition plans that focus on reducing offender risk.

11

PHASE THREE- STAYING HOME

12

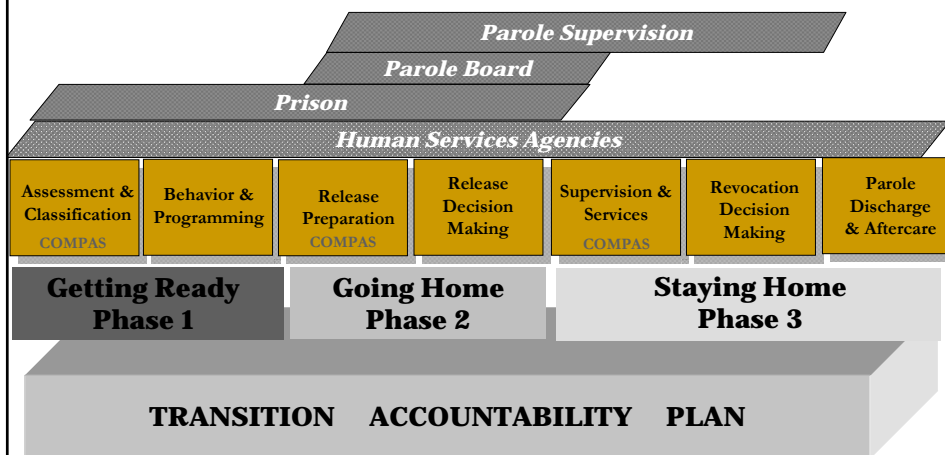
PHASE THREE

The **community and discharge phase** begins when the prisoner is released from prison and continues until discharge from community parole supervision. In this phase, it is the responsibility of the former inmate, human services providers, the offender's network of community supports and mentors to assure continued success. Phase Three involves the final three major decision points of the transition process:

- 5. Supervision and services:** Providing flexible and firm supervision and services.
- 6. Revocation decision making:** Using graduated sanctions to respond to behavior.
- 7. Discharge and aftercare:** Determining community responsibility to "take over" the case.

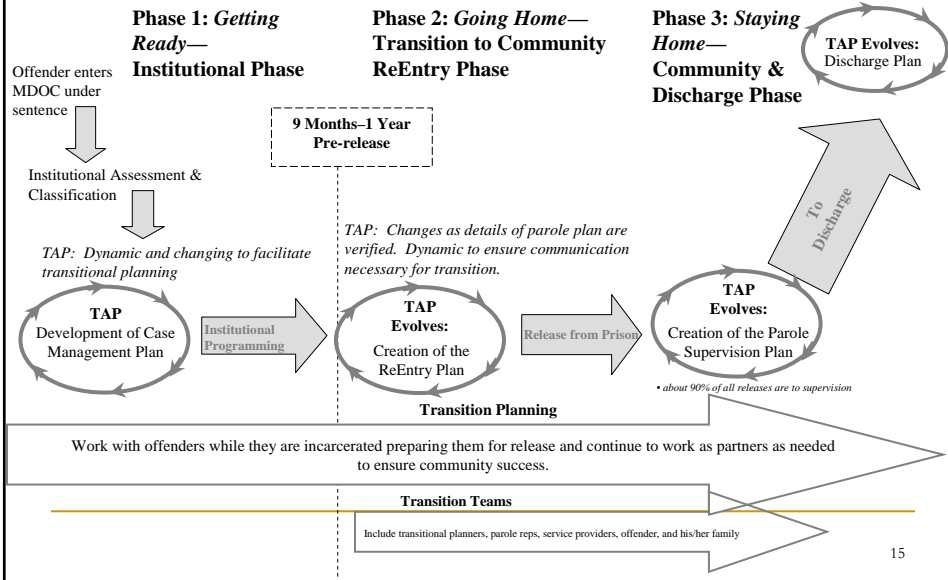
13

MPRI Model



14

MPRI Process



MPRI Implementation Timeline

■ Up-to-Scale Goal

- System-wide implementation of Phases 1, 2, and 3 by January 2011.

MPRI Implementation Timeline

- Developing the Model: October 2003
- Phase 2 and Phase 3 Implementation
 - ***In-Reach Facilities: COMPAS & TAP***
 - ***Comprehensive Community ReEntry Planning***
 - Launch Intensive ReEntry Units: Jan 2005
 - Launch planning at eight Pilot Sites: June 2005
 - Statewide Implementation: October 2007
 - Quality Assurance Planning and Continuous Quality Improvement to increase the understanding and implementation of effective practices: 2008

17

MPRI Implementation Timeline

- Phase 1 Planning
 - ***Risk Assessment and Transition Accountability Planning***
 - ***Evidence-based Practices***
 - COMPAS and TAP administered at the Reception and Guidance Centers: October 2008
 - Review of all prison-based programs: Summer 2008
 - Certification and implementation of “ReEntry Approved” programs: 2009
 - Special Populations
 - Mental Health ReEntry Demonstration: 2007
 - Youthful Prisoner ReEntry Demonstration: Fall 2008
 - Medically Fragile ReEntry Demonstration: 2009
 - Developmental Disabilities ReEntry Demonstration: 2009

18

MPRI Governance

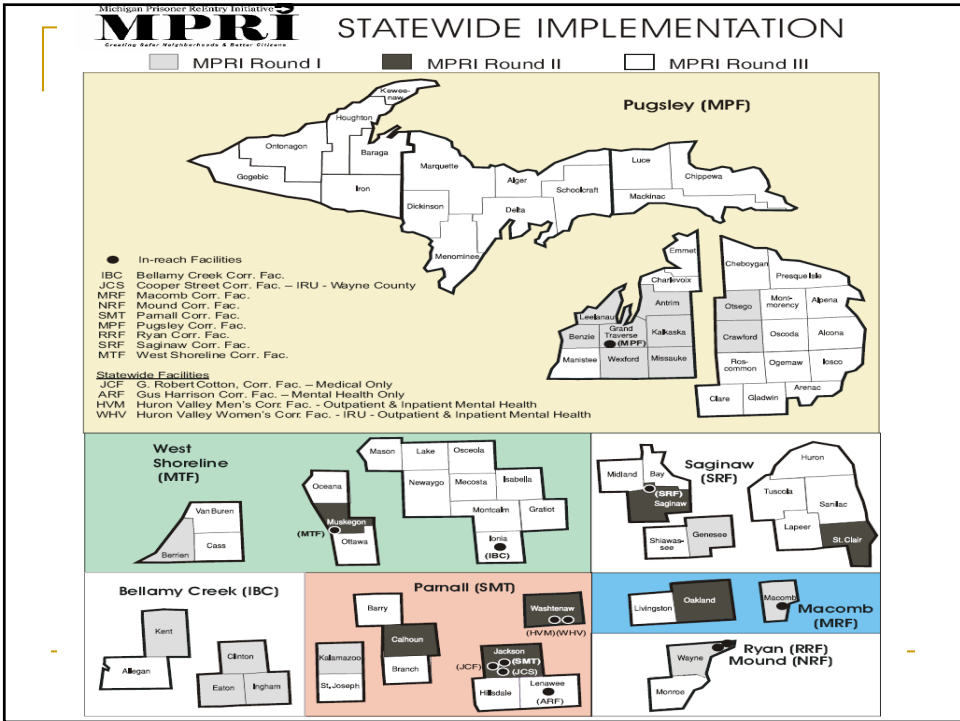
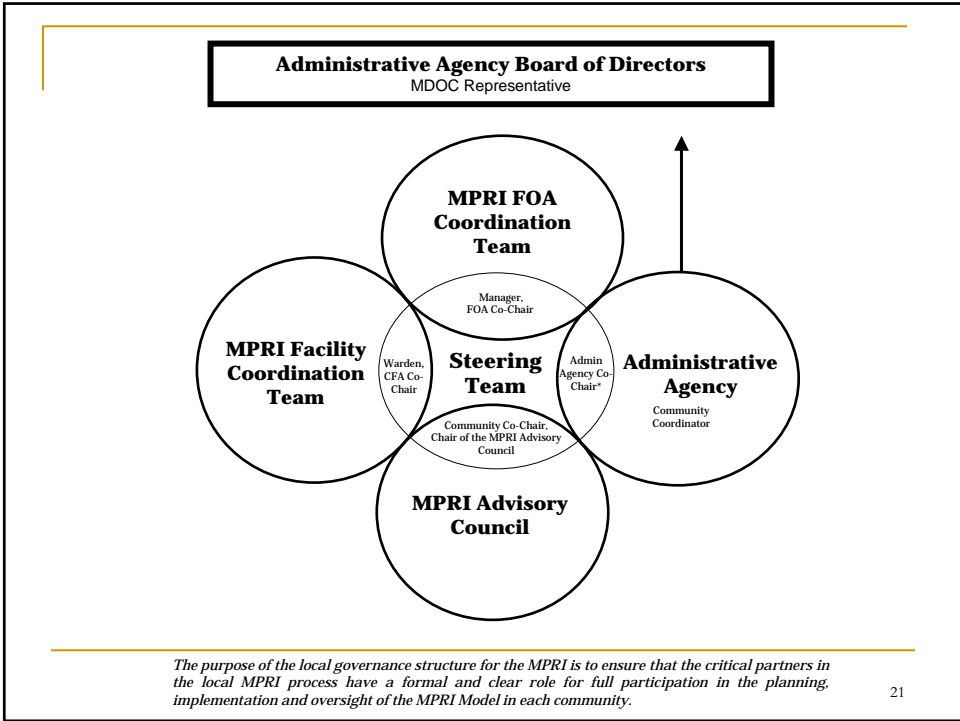
- **State Governance:**
 - State Policy Team
 - Executive Management Team
 - Statewide Advisory Council
 - MDOC's Offices of Offender ReEntry
-

19

MPRI Governance

- **Local Governance:**
 - Four Co-Chairs
 - Steering Teams
 - Transition Teams
 - Community Coordinator
-

20





*The **VISION** of MPRI is that every prisoner released into the community will have the tools needed to succeed.*

www.michpri.com

23